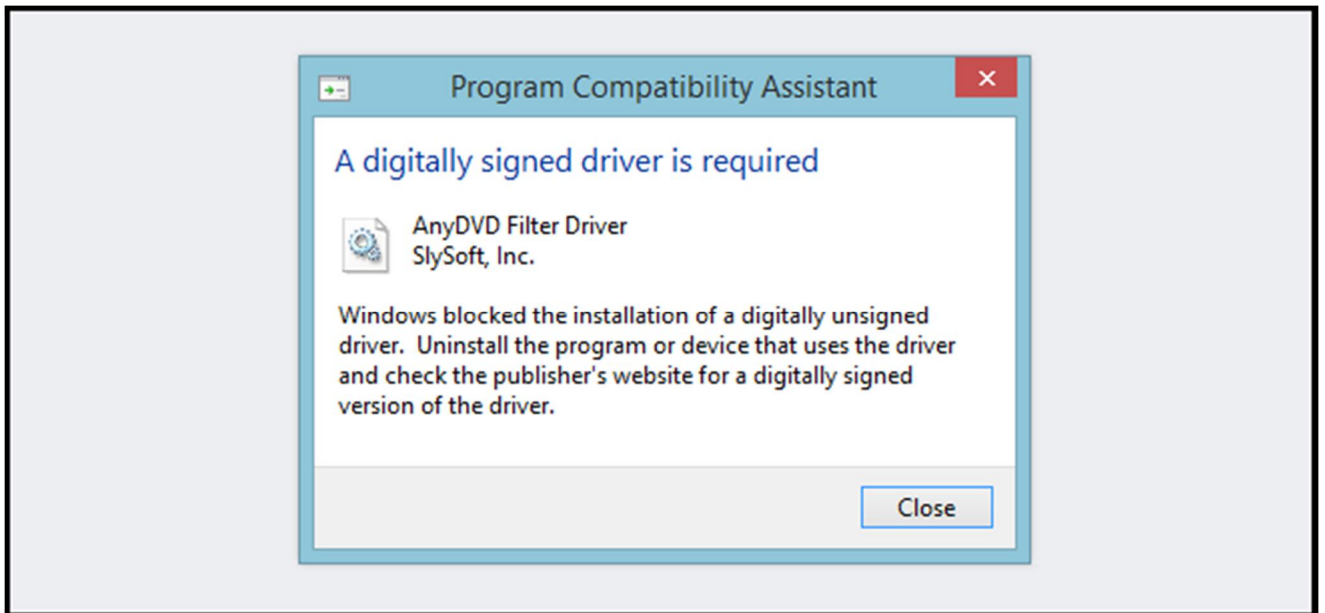


## How to Disable Driver Signature Verification on 64-Bit Windows 8.1 (So That You Can Install Unsigned Drivers)

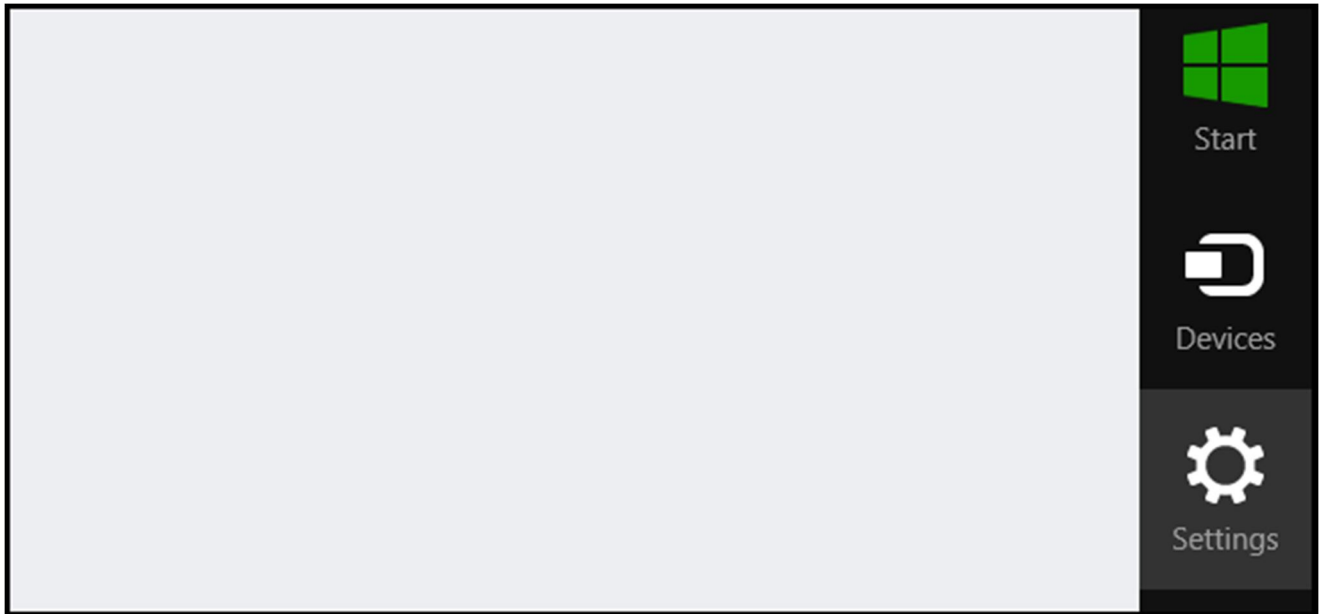


64-Bit editions of Windows require digitally signed drivers. The problem is that many devices ship with unsigned drivers. Today, we'll show you how to install them regardless.

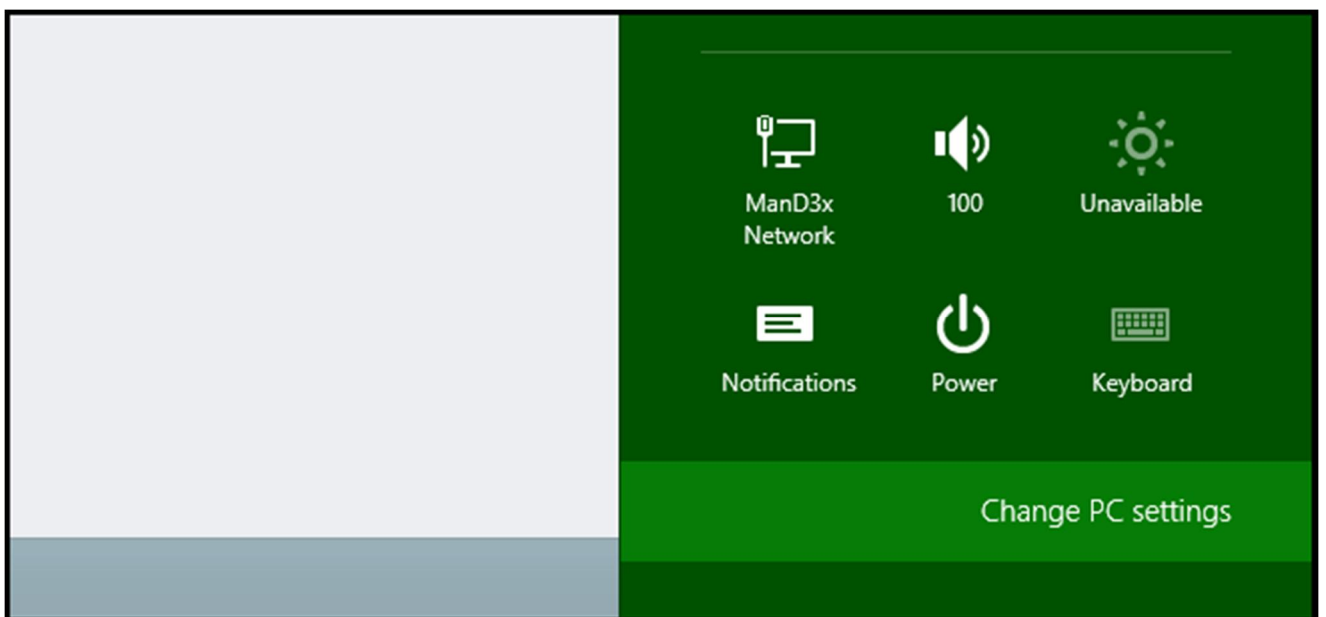
Digitally signed drivers include an electronic fingerprint that indicates which company the driver was produced by as well as an indication as to whether the driver has been modified since the company released it. This increases security, as a signed driver that has been modified will no longer have an intact signature. Drivers are signed using code signing certificates.

### How to Disable Driver Signature Verification on 64-Bit Windows 8.1

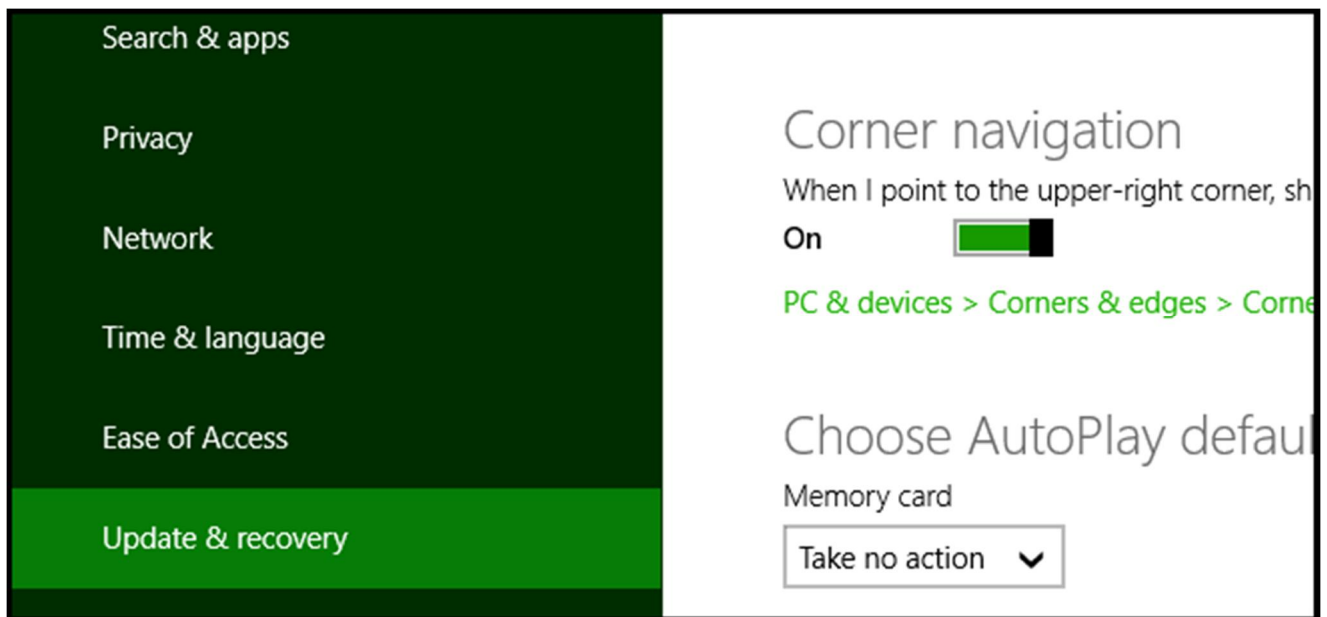
Press the Win + C keyboard combination to bring up the Charms Bar, then click on the Settings Charm.



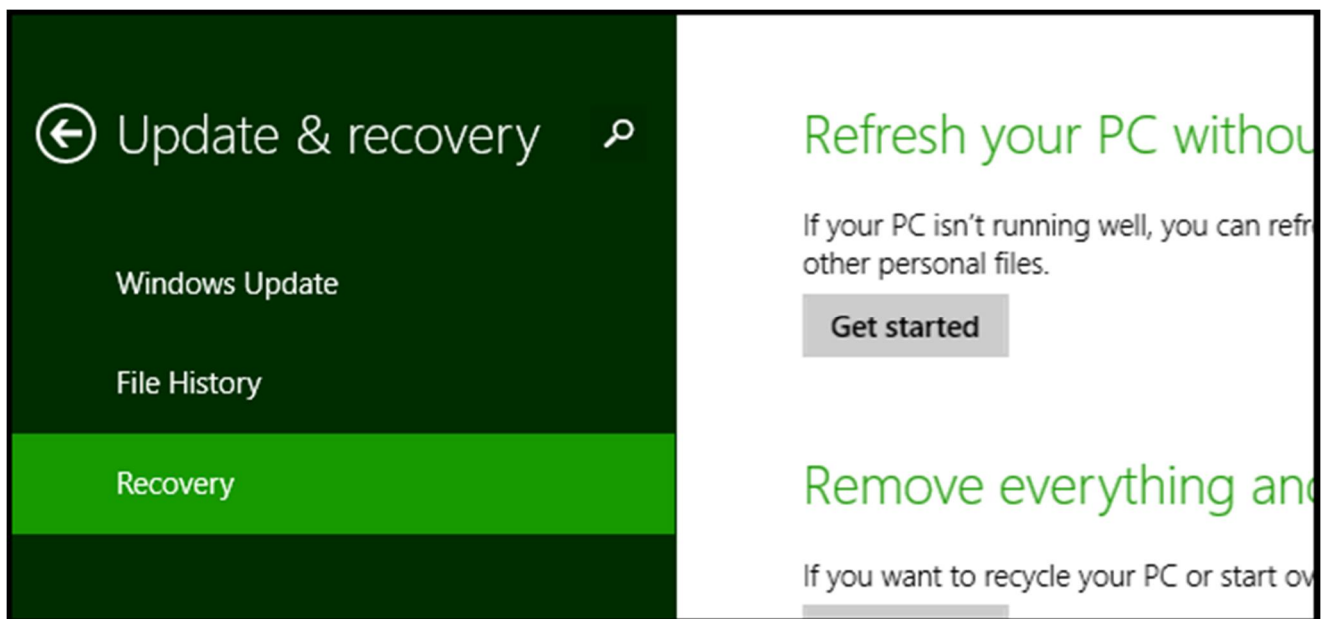
We need to head into the Modern Control Panel, so go ahead and click on the Change PC settings link.



When the Control Panel opens, switch over to the "Update & recovery" section.



Then click on the Recovery option on the left hand side.



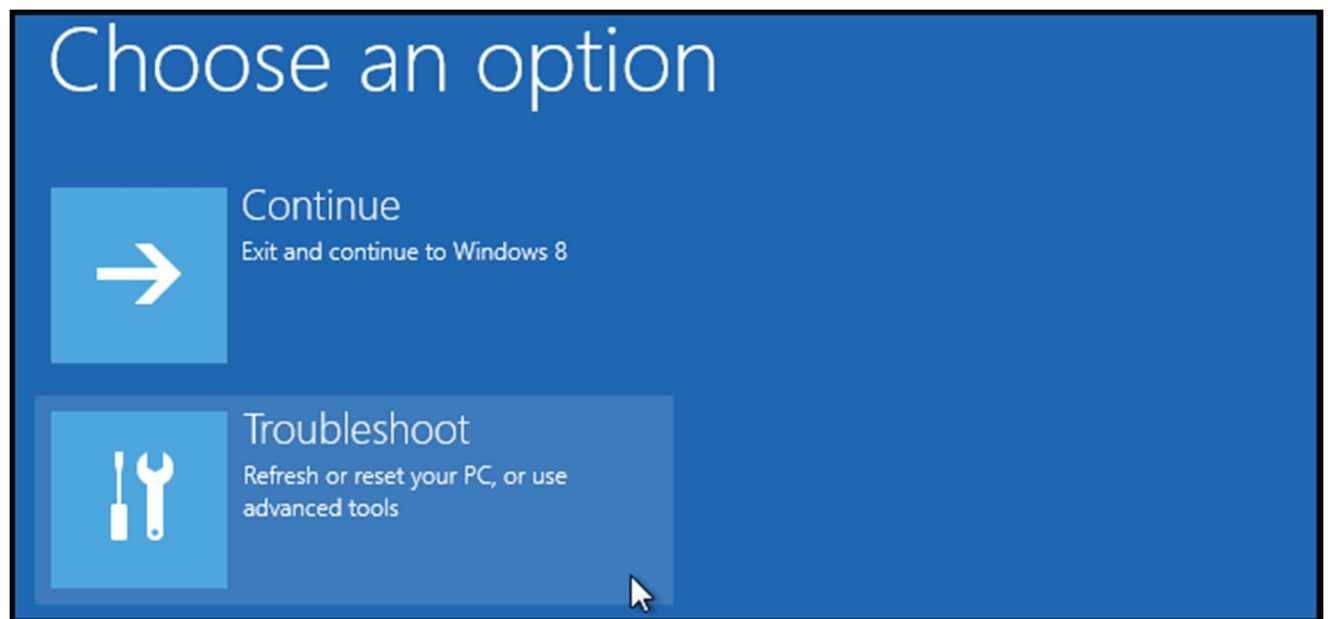
Once selected, you will see an advanced startup section appear on the right hand side. You will need to click on the "Restart now" button.

## Advanced startup

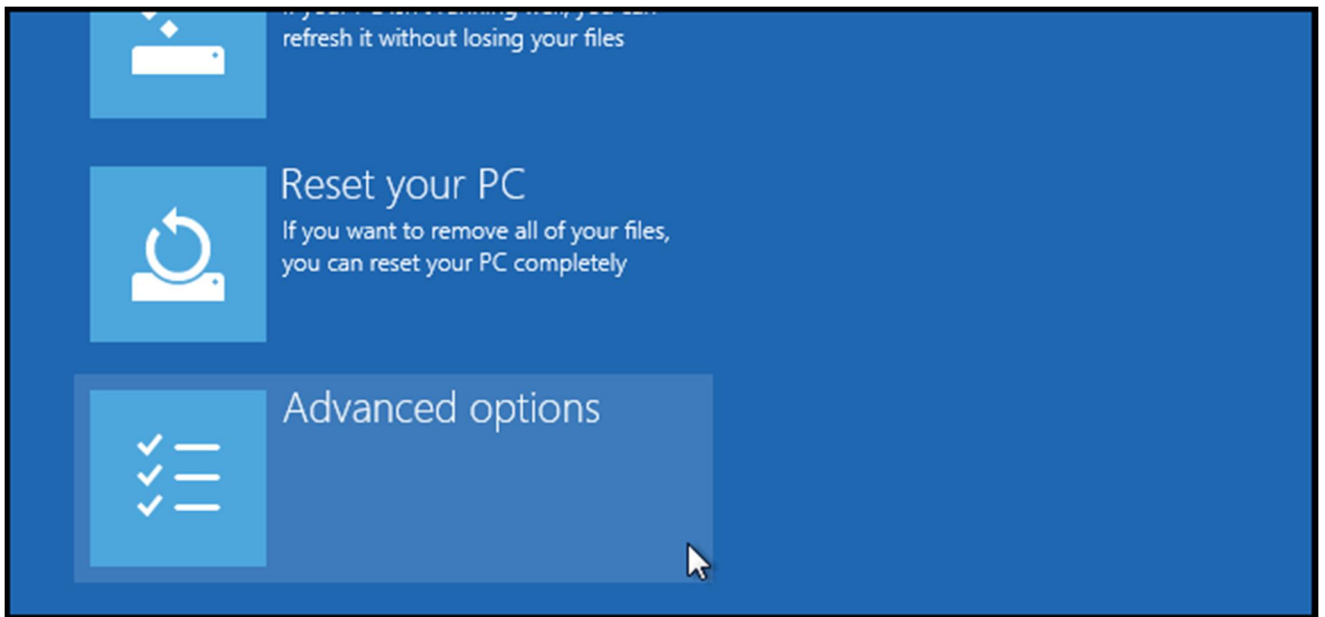
Start up from a device or disc (such as a USB drive or DVD), change Windows startup settings, or restore Windows from a system image. This will restart your PC.

**Restart now**

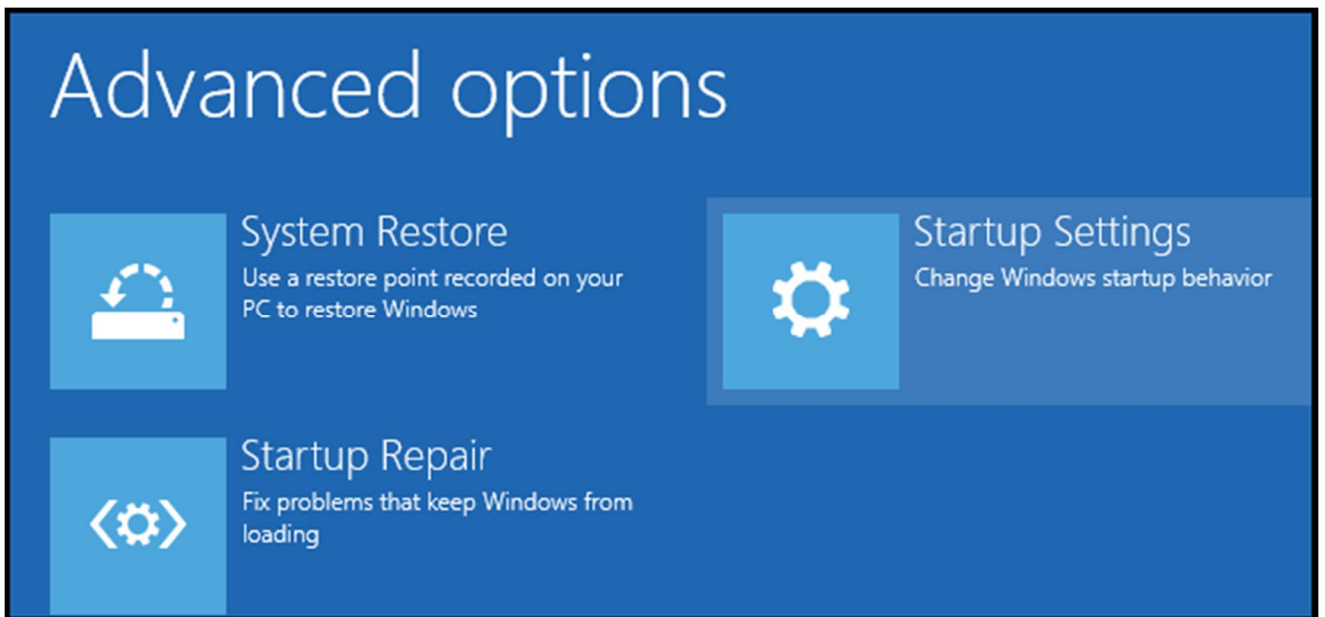
Once your Computer has rebooted you will need to choose the Troubleshoot option.



Then head into Advanced options.



Then Startup Settings.



Since we are modifying boot time configuration settings, you will need to restart your Computer one last time.

Restart to change Windows options such as:

- Enable low-resolution video mode
- Enable debugging mode
- Enable boot logging
- Enable Safe Mode
- Disable driver signature enforcement
- Disable early-launch anti-malware protection
- Disable automatic restart on system failure

Restart

Finally, you will be given a list of startup settings that you can change. The one we are looking for is “Disable driver signature enforcement”. To choose the setting, you will need to press the F7 key.

## Startup Settings

Press a number to choose from the options below:

Use number keys or functions keys F1-F9.

- 1) Enable debugging
- 2) Enable boot logging
- 3) Enable low-resolution video
- 4) Enable Safe Mode
- 5) Enable Safe Mode with Networking
- 6) Enable Safe Mode with Command Prompt
- 7) Disable driver signature enforcement
- 8) Disable early launch anti-malware protection
- 9) Disable automatic restart after failure

That's all there is to it. Your PC will then reboot and you will be able to install unsigned drivers without any error message 😊